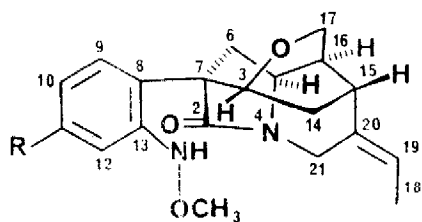


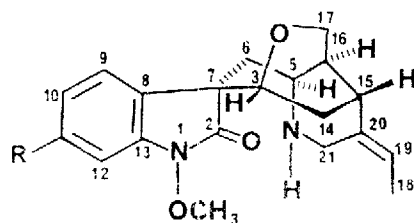
CORRIGENDUM

Tetrahedron Lett. Vol. 30, No. 10, pp 1177-1180 (1989)-

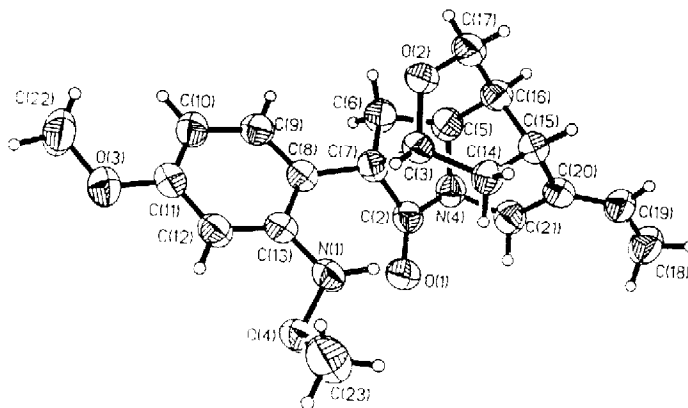
"GELSEMIAMIDE AND 11-METHOXYGELSEMIAMIDE, TWO NOVEL SECOINDOLE ALKALOIDS FROM GELSEMIUM ELEGANS" by Long-Ze Lin, Geoffrey A. Cordell*, Chao-Zhou Ni and Jon Clardy, Page 1180, the two sentences in the middle of the first paragraph should read as follows: "The absolute configuration shown was set by assuming that C₁₅ is the biogenetically controlled asymmetric center with the same R absolute stereochemistry as the humantenines [2]. The other four asymmetric centers, C₃, C₅, C₇ and C₁₆ have the same R, S, R, and S configurations as in the humantenines. This is supported by the observation that 11-methoxygelsemiamide (2) has an identical CD curve to those of the humantenines [2]." Page 1179, the molecular formula for 1 should be C₂₀H₂₄N₂O₃, and the structures of 1, 2, 3 and 4, and the molecular structure for 2 should be:



1 R=H
2 R=OCH₃



3 R=H
4 R=OCH₃



Molecular Structure for 2